

FIGURE 24. A, Mean electrical axis left of minus 30 degrees. Description the same as for Figure 23.

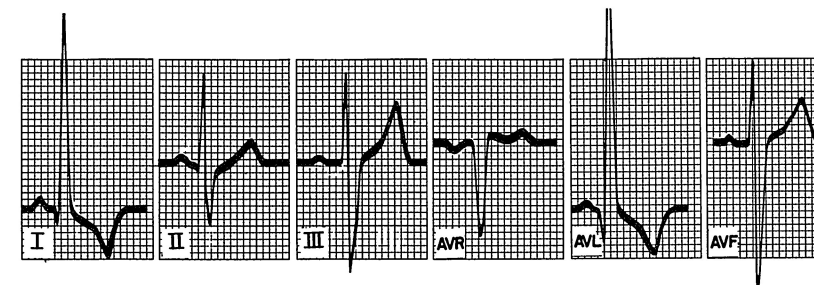
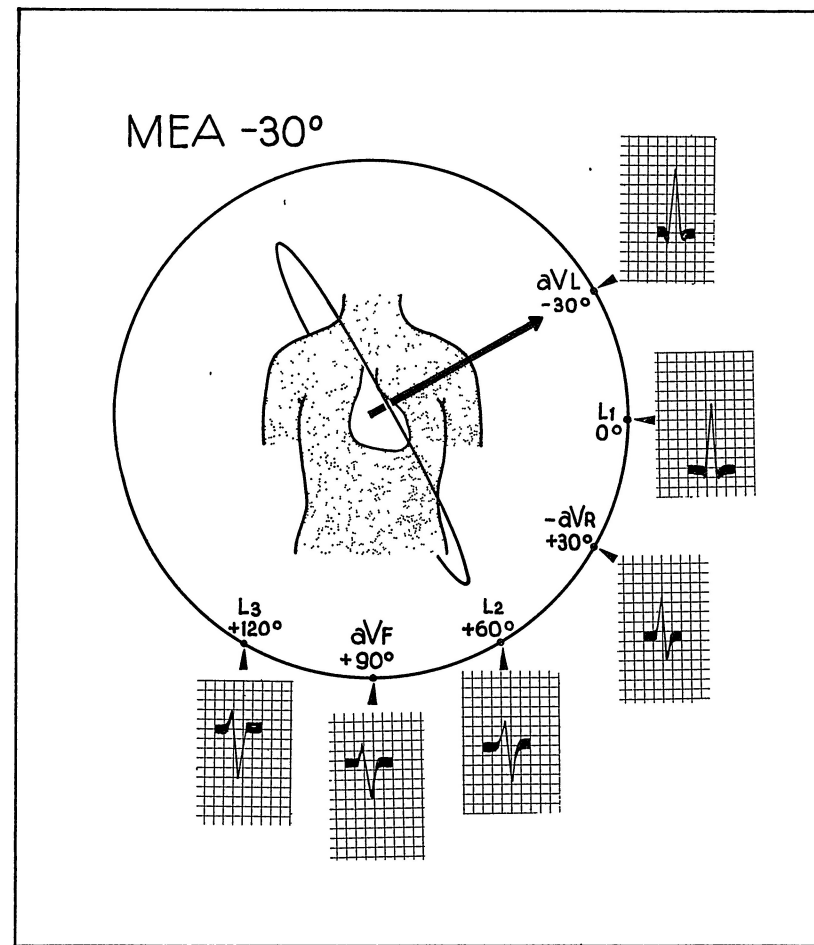


FIGURE 24. B, The maximum positive voltage of the QRS is found in aVL. The transitional zone of the QRS is found in lead 2. The mean electrical axis of the QRS points directly to aVL, at minus 30 degrees. The electrocardiogram shows the six limb leads associated with a mean electrical axis of QRS in approximately this direction.