

FIGURE 24. E. The maximum positive voltage of the QRS is recorded in lead 2. The QRS in aV_L is transitional. Leads 1, minus aV_R , lead 2, aV_F , and lead 3, are all resultantly positive. The mean electrical axis is, therefore, directed to the lead 2 position, plus 60 degrees. The electrocardiogram shows the six limb leads associated with a mean electrical axis of QRS in approximately this direction.

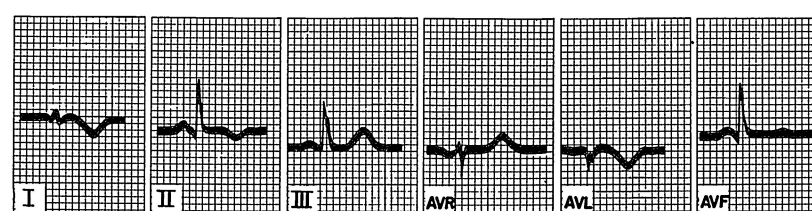
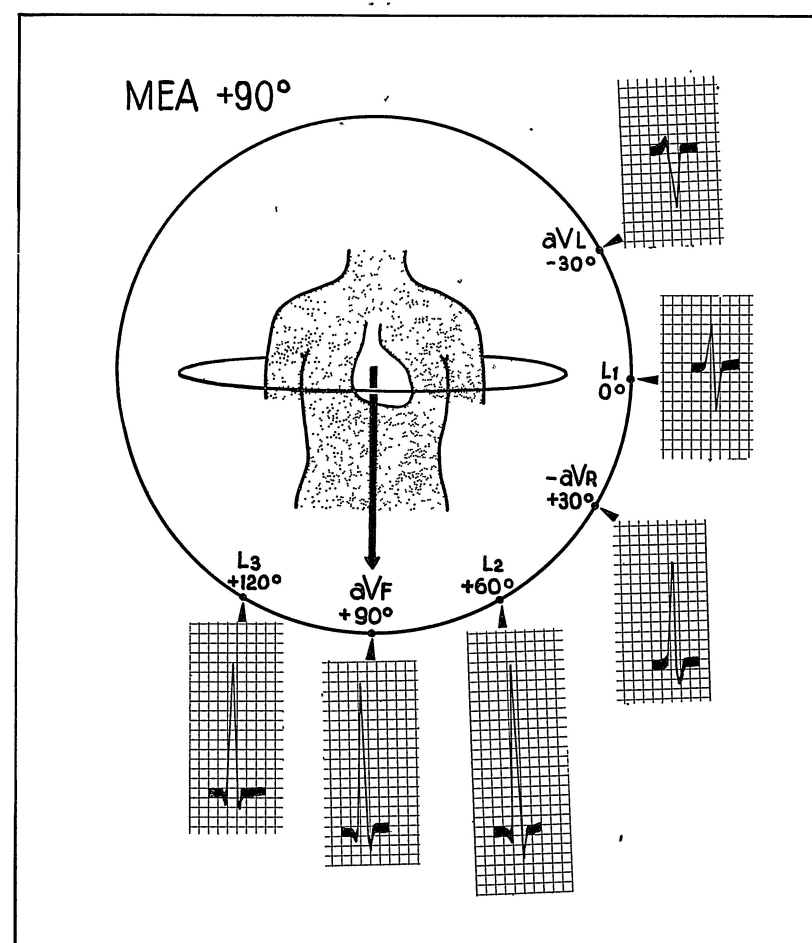


FIGURE 24. F. The maximum positive QRS complex is recorded in aV_F and both leads 2 and 3 are positive and almost equal in voltage to aV_F . Lead 1 shows a transitional QRS complex. The mean electrical axis is, therefore, vertical, directed toward aV_F . Note that aV_L is behind the transitional zone and is resultantly negative. The electrocardiogram shows the six limb leads associated with a mean electrical axis of QRS in approximately this direction.